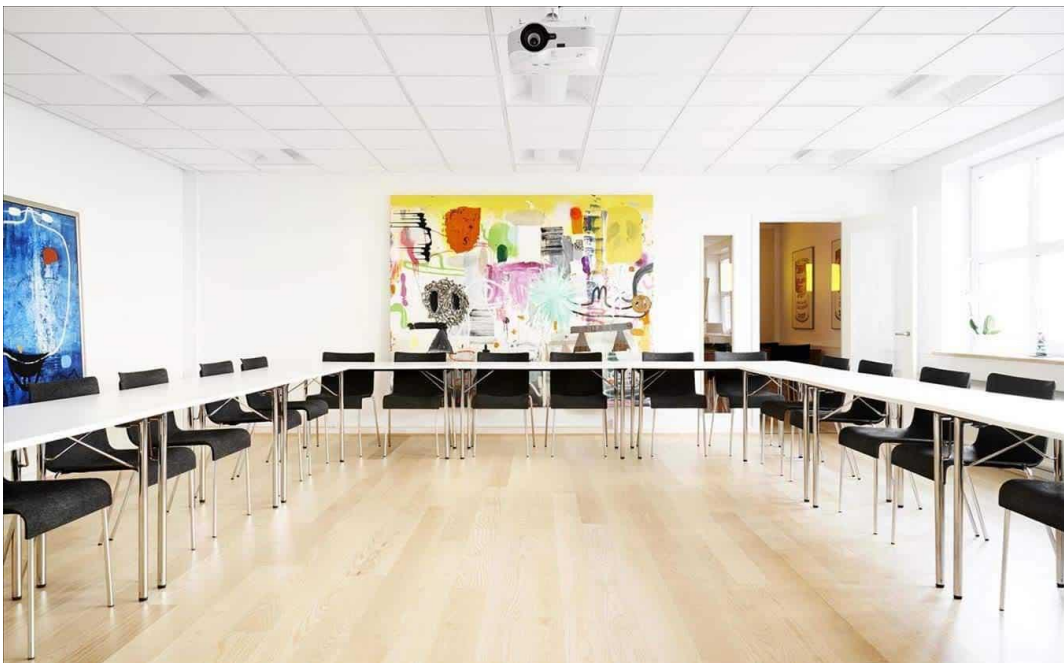


# AGS NEWSLETTER

## *Workshop in Copenhagen*



We have a 2-, 3- or 5-day workshop ready and it is being held in central Copenhagen the 5<sup>th</sup>-9<sup>th</sup> of October 2020.

The workshop consists of 3 modules:

- **ERT**  
Get an insight into the ideas and theories behind processing and inversion of time-domain ERT data. The focus is on datasets collected for geological, hydrological, and geotechnical purposes. For this, we use the software packages Aarhus Workbench and Geotomo Res2DInv/Res3DInv.
- **Ground based TEM**  
We will cover the basics of the TEM method and how to do simple processing and inversion of single soundings. For this we use Aarhus SPIA which is a processing and inversion software for ground based TEM data.
- **Airborne and ground based towed TEM**  
Get into the processing and inversion of Airborne and ground based towed TEM data. We use the ground based and airborne TEM modules of Aarhus Workbench which have powerful processing, inversion and visualization tools.

[Read the full program and sign up here.](#)

## *Short course*

We have the short course:

**A Practical Guide to Multi-Dimensional ERT and TEM Surveys and Data Interpretation.**

It is being held the 2<sup>nd</sup> of November at the 3rd Asia Pacific Meeting on Near Surface Geoscience & Engineering in Chiang Mai.

[Read more and sign up here](#)

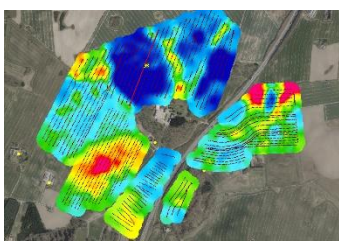
## *Free demonstration day*

**Free demonstration day**

The 30<sup>th</sup> of August, we have a free demonstration day at the Near Surface Geoscience Conference & Exhibition 2020 in Belgrade, Serbia.

[Read the full program and sign up here.](#)

## *Aarhus Workbench 6.3 in development*



Workbench 6.3 is in development with several new features:

- Cloud inversion. Run your large inversion in the cloud on fast computational servers. Pay per hour.
- Voxel inversion of ground based and airborne TEM data.
- Airborne TEM IP SCI inversion.
- New LCI/SCI inversion setup.
- Update GIS interface – support for Open Street Maps, google maps, etc.

## *Conferences*



- EAGE Near Surface – Belgrade. September 2020
- EAGE Near Surface -Chiang Mai. November 2020
- SAGEEP - Denver - to be announced
- EXPOMIN - Chile – to be announced