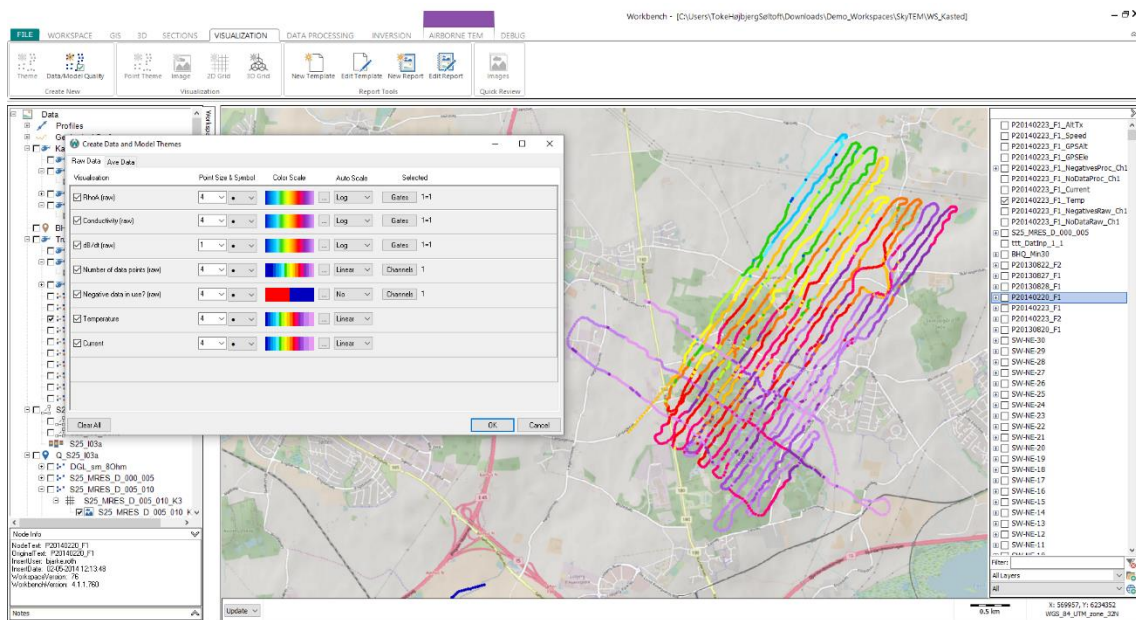


## NEW WORKBENCH RELEASE



### Aarhus Workbench 6.4 release

Workbench is out with a new major update to version 6.4. Some of the new features are:

- New tool for creating point themes from the data nodes. Display raw and average data and auxiliary on the GIS before processing. The tool is available for the data types: GCM, ground based and airborne HEM/TEM and Streamed ERT.
- New HSI color scale tool. The HSI color model represents every color with three components: hue (H), saturation (S), intensity (I) and is an alternative representation of the known RGB color scale.
- Loaded models are kept in memory for faster workflow.
- A GIS layer with flight line numbers are automatically created (if available) when adding data to the GIS interface.
- Possible to automap several consecutive columns in our General Model importer.
- New XYZ model export. The export includes a new line for each layer in each model. For easier import into e.g. Leapfrog.
- Large performance improvement on our ERT processing tool.

See all new features in the [release log](#).

### Aarhus Workbench 6.5 in development

We are working on the next update and some of the new features will be:

- New a priori tool for SCI starting models: Select LCI inversion models and use the resistivity, IP parameters and inverted altitude as starting models for the SCI inversion.
- Upgrade of Firebird engine: A new embedded version of Firebird will be integrated into Workbench for a faster database handling.
- New mag module for the Tmag instrument
- A general update of our export formats and a new export to Geosoft GDB format.
- The first beta version of our TEM sheets inversion.



### New webinars available online

New webinars are available online:

- 3D inversions in Res3DInv from 2D surveys
- How to use report templates for PDF reports in Aarhus Workbench

See our webinars, slides and Q&A [here](#).