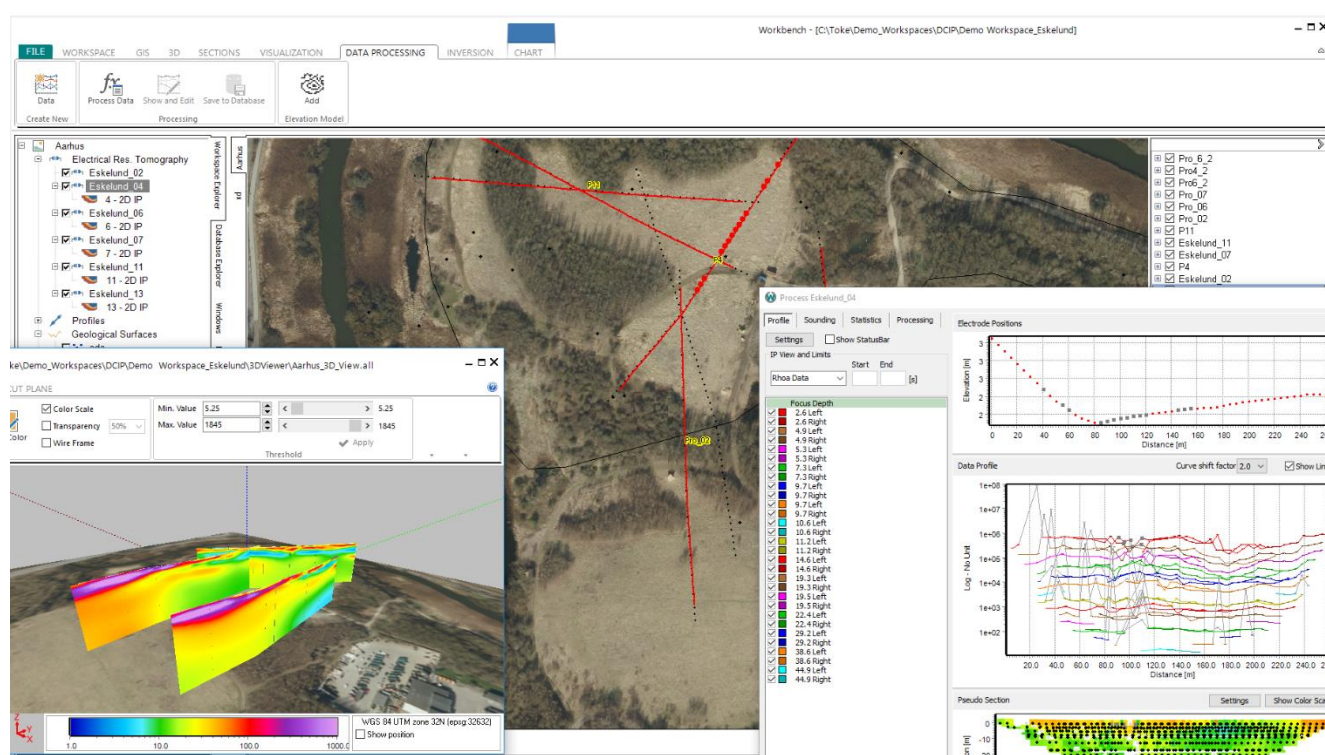


# AGS NEWSLETTER



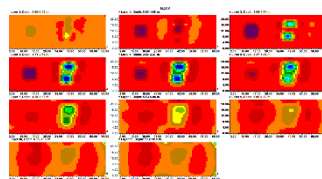
## Workbench 6.1 release

Aarhus Workbench 6.1 is released with new features such as:

- New batch export, batch edit and batch create tools.
- New tool for applying standard deviation to data close to sign changes.
- Separated altitude and 1st layer a priori processing settings for frequency ground based and airborne data.

To read more about all the new features go to our [news section](#) on our webpage.

A list of all features and fixes are also be found in our [release history](#).



## New release of Res3DInv

Res3DInv have been updated with a few new features and fixes. See the changes in the [release history](#).

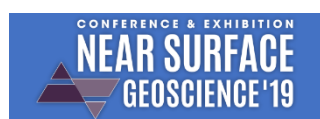
## New documentation



- New [hands-on guides](#) for SkyTEM, VTEM and AeroTEM data.
- Along with our wiki pages for [SPIA](#) and [Workbench](#), we now also have a new wiki page for [Geotomo's Res2DInv/Res3DInv](#).
- Course notes for resistivity/IP and Res2DInv and Res3DInv can be found [here](#)
- A guide for importing inversion results from Res2DInv and Res3DInv for visualization in Aarhus Workbench Essentials can be [downloaded here](#).
- Our webpage <https://www.aarhusgeosoftware.dk/> has been updated with new design and content.

## Conferences/Workshops

- EAGE NS, The Hague, September 2019
- SAGA, Durban, October 2019
- 1st Indian Near Surface Geophysics Conference & Exhibition, New Delhi, November 2019



### Workshops

#### SAGA

<http://sagaconference.co.za/workshop-5em/>

#### 1st Indian Near Surface Geophysics Conference & Exhibition, New Delhi

<http://www.nearsurfacegeophysics.in/assets/img/preconference-workshop.pdf>

Contact us for more information, meetings etc.