

AGS DEVELOPMENT NEWS

Workbench 6.2 in development with voxel inversion

Aarhus Workbench 6.2 is under development and will include voxel inversion, Updated GIS interface, new tools for color scales and more:

- Voxel inversion for airborne TEM and ground based towed TEM systems. The voxel inversion option will automatically be added to existing TEM SCI licenses.
- Updated GIS interface with support for WFS, TMS, WMTS servers. An Open Street Maps server will be available for all users.
- Our color scale editor has been rewritten to be faster and with new tools for manual setup of ticks and formats.
- Add Depth of Investigation to the 3D viewer for better presentations of Voxel models and 3D gridding results.
- Optimized Batch Profile tool for faster creation and print of hundreds of profiles.

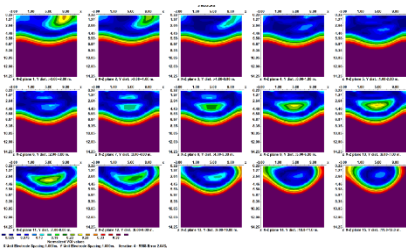
New release of SPIA

The next version of SPIA is for release in a few weeks with Cole-Cole and MPA inversion for TEM data with IP effects. Other features such as IP support for VES, save any inversion model as new starting model, run inversion on all sounding, labels on Open Street Map and more will also be included.



New Res3DInv Enterprise Edition releasing soon

A new Res3DInv Enterprise Edition will soon be released with several new features:

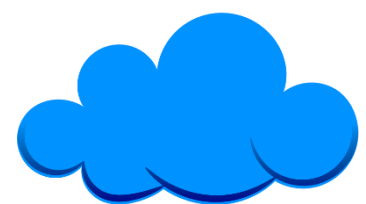


- Option to subdivide large finite-element mesh into segments to reduce computer time, memory and disk space required.
- Support for vector arrays data sets for arrays with a two-component receiver such as the Iris FullWaver System.
- Volume Of Investigation calculations.
- Calculation of point-spread-function to give a measure of how widely the information from a region of the subsurface is spread out to the surrounding model cells in the inversion model.

Cloud inversion in development

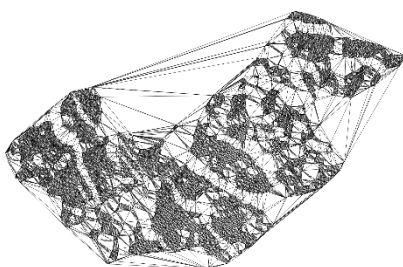
Cloud inversion are being implemented into Aarhus Workbench for users who don't have their own servers or wants to save time when running large inversions.

Internal tests are running, and we will have more on the subscription model and prices later.



Other development

Looking into 2020 we have several new features and tools in development for Aarhus Workbench:



- New SCI/LCI inversion setup. Airborne TEM IP inversions for SCI, faster setup and a priori options for LCI.
- New data processing tool, replacing the existing tool.
- New tool for visualizing for inversion models. Replacing the existing tool.
- 3D viewer version 2.
- Sheets inversion code.