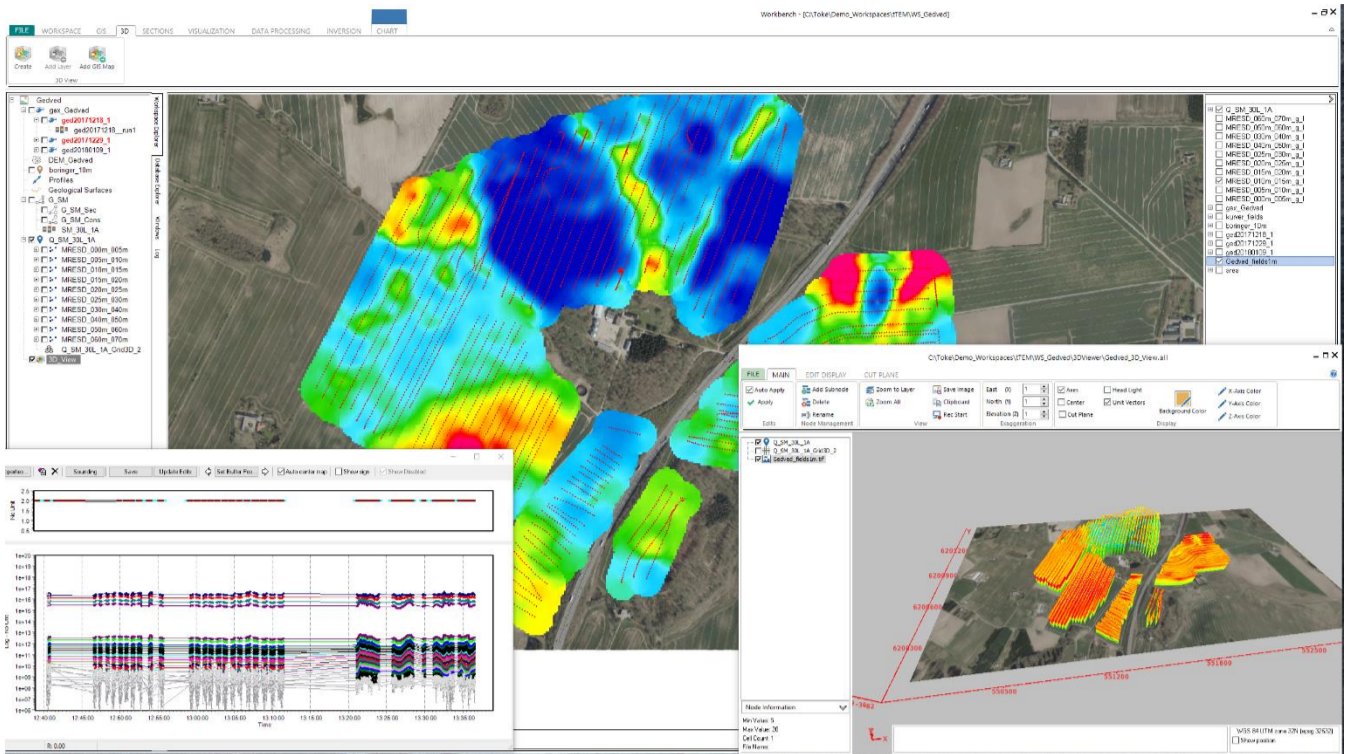


AGS NEWSLETTER



Workbench 6.0 release

Aarhus GeoSoftware are happy to release Aarhus Workbench 6.0. Some of the new features are:

- Size of inversion jobs not restricted by the 32-bit memory limit
- Create themes from external VTK files on GIS interface
- Airborne TEM: select data based on line numbers for inversion
- SkyTEM Data: new tool for setting standard deviation around sign changes for system response modelling
- New ABEM Terrameter LS Importer. Support for database files
- Add IP parameters to 3D viewer
- ERT: support for integrated IP data files

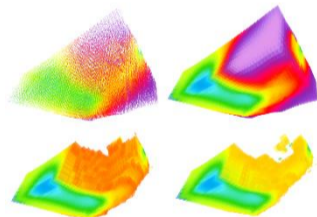
See all new features and bug fixes in the [release history](#).

The new Workbench 6.0 only supports 64-bit operative systems. To get the new update, download the new Workbench 6.0 installer from our [website](#). Existing installed Workbench versions **cannot** be updated automatically.

New releases of Res2DInv and Res3DInv

Res2DInv and Res3DInv have been updated.

Res2DInv



- Options to calculate and display the model resolution point-spread function values.
- Model resolution values are included in xyz output file for data with global coordinates.
- VTK export now includes a VTK with electrode positions.
- Bug fixes

To see all new features and bug fixes, see [release history](#).

To get the newest updates, open Res2DInv/Res3dInv and follow the update instructions or download the new installer from our [webpage](#).

Conferences/Workshops

- AGU-SEG Airborne Geophysical Workshop, Davie, June 2019
- ExpoGef, Rio de Janeiro, August 2019
- AEGC, Perth, September 2019
- EAGE NS, The Hague, September 2019
- SAGA, Durban, October 2019
- EAGE NS, New Delhi, November 2019

Workshops

EAGE-GSM

<https://events.eage.org/en/2019/eage-gsm-nsge-2019/technical-programme/short-course/sc-1>

AGU-SEG Airborne Geophysical Workshop

<https://connect.agu.org/2019aguseg/program/pre-workshop-short-course>

SAGA

<http://sagaconference.co.za/workshop-5em/>

Contact us for more information, meetings etc.

