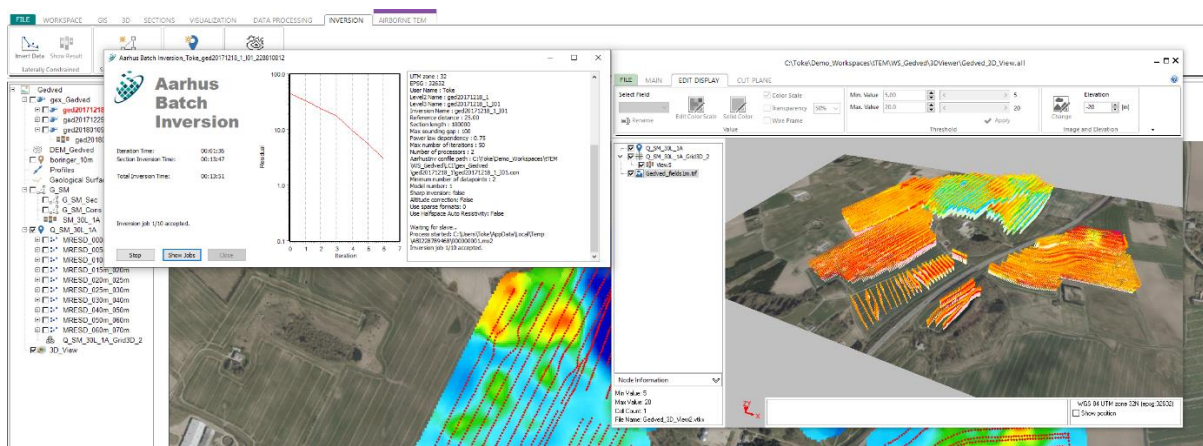


AGS NEWSLETTER



Workbench 5.9 release

Workbench 5.9 has been with release with new features such as:

- Aarhus Batch Inversion Distributed – use local Servers/PC's for inversion jobs.
- Speed optimization for Streamed ERT data.
- Keep raw data for airborne TEM data. Possible to skip all processing filters in data is already processed outside Workbench.
- New Iris Instrument importer. Support for Iris bin files.
- Better support for topography and coordinates in ERT import.
- Several tTEM updates.
- MPA inversion enabled for airborne TEM IP and ERT/IP inversions.

To see all new features and bug fixes, see [release history](#)

To get the newest updates, open Workbench and follow the update instructions or download the new installer from our [webpage](#).

Aarhus Batch Inversion Distributed

Aarhus Batch Inversion Distributed (ABI) is an addon to Workbench for users who wants to use their local servers or PC's for inversions and queue system.

If enabled the user can choose either all or specific servers/PC's in the local network for the individual inversion. ABI will automatically queue the inversion until a server/PC is available for the inversion job with the selected number of CPU's.



Key features

- Choose number of CPUs and servers wanted for inversion and ABI will automatically use the first available server/PC with the number of CPU available.
- Possible to see the queue of inversions and the users of each inversion.
- Possible to make a server/PC available only within certain hours. Desktop PC's can then be setup to only be available after working hours.
- Using the service AarhusRunner to perform performance-demanding computation tasks ordered by ABI.

ABI comes in a free, standard and professional version.

Read more about ABI, prices and installation on our [webpage](#)

Conferences/Workshops

SAGEEP, Portland, March 2019
 EAGE-GSM, Kuala Lumpur, April 2019
 AGU-SEG Airborne Geophysical Workshop, Davie, June 2019
 ExpoGef, Rio de Janeiro, August 2019
 AEGC, Perth, September 2019
 EAGE NS, De Hague, September 2019
 SAGA, Durham, October 2019

Workshops

EAGE-GSM

<https://events.eage.org/en/2019/eage-gsm-nsge-2019/technical-programme/short-course/sc-1>

AGU-SEG Airborne Geophysical Workshop

<https://connect.agu.org/2019aguseg/program/pre-workshop-short-course>

SAGA

<http://sagaconference.co.za/workshop-5em/>

Contact us for more information, meetings etc.

UNSUBSCRIBE | ABOUT | NEWS | CONTACT | STAY CONNECTED 

Aarhus GeoSoftware | Skolegade 21,1, 8000 Aarhus C, Denmark | Tel: +45 6165 6570
info@aarhusgeosoftware.dk | www.aarhusgeosoftware.dk