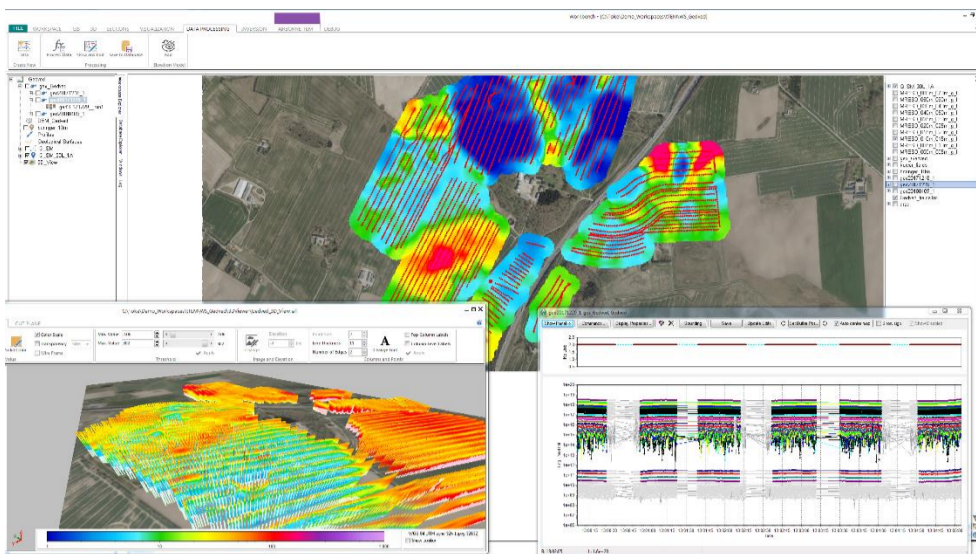


# AGS NEWSLETTER



## Workbench 5.8 release

We have just released Workbench 5.8 with new features such as:

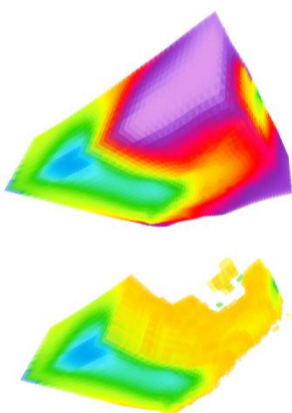
- New export form for all data types and models. Possible to transform coordinates on export
- Export raw and average data for GCM, HEM and sERT data
- L1 norm (blocky) inversion for SCI inversion
- Integrated IP inversion for ERT/IP data
- Add 3D grids to sections
- New external grid imports with support for Surfer and VTK files.

## Integration of Res2DInv and Res3DInv in Aarhus Workbench Essentials

With our new grid import, we now have integration where it is possible to import inversion results from Res2DInv/Res3DInv and visualize it along other data on the GIS interface, in sections and 3D Viewer. These features are a part of the Workbench Essentials module that also includes import of borehole data, geophysical logs and pdf report tool.

To see all new features and bug fixes, see [release history](#)

To get the newest updates, open Workbench and follow the update instructions or download the new installer from our [webpage](#).



## New update of Res3DInv

Res3DInv has been updated to version 3.14.14 where some new features are:

- Model resolution calculations changed to double precision.
- Option to disable automatic continuation of iterations for large meshes if program has not converged.
- Minimum thickness of first model layer reduced to 0.2 times minimum depth of investigation.
- Maximum thickness of first layer increased to 5 times the minimum model grid spacing.

To see all new features and fixes, see [release history](#).

## New guides and manuals

We have used the summer holidays making new guides and documentation



- System response modelling guide for SkyTEM data.
- Sharp inversion guide (thanks to the HydroGeophysics Group)
- Updated guides for all airborne systems with our new .gex file format
- New video guides
- New tTEM demo workspace
- New updated demo workspaces for ERT/IP, GCM, SkyTEM, Streamed ERT and SPIA TEM.
- New workflow guides from import to processing, inversion and visualizing for ERT/IP.

Go to our wiki page to see all documentation: <http://www.ags-cloud.dk/Wiki/Workbench>



## Conferences

IP workshop - Rutgers University, October  
SEGJ - Tokyo, November

Contact us for more information, meetings etc.