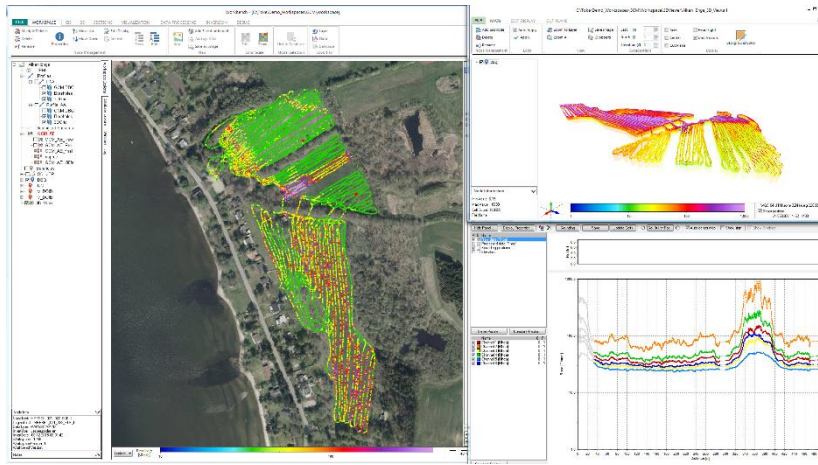


AGS NEWSLETTER



Workbench 5.7 released

We have released Workbench with many new features.:

- 40-layer inversion models supported
- New 3D gridding option of inversion models for 3D Viewer
- Cole-Cole and Maximum Phase Angle (MPA) inversion for airborne data with IP-effects (test-phase)
- Depth Of Investigation (DOI) for all IP parameters
- Themes and QC visualization for all IP parameters
- New optimized AarhusInv inversion code (ver. 8.11) with new advanced configuration setup
- New inversion setup for airborne HEM and TEM data.
- Run res2DInv from Workbench
- Bug fixes

To see all new features and bug fixes, see [release history](#)

To get the newest updates, open Workbench and follow the update instructions or download the new installer from our [webpage](#).

Workbench 5.8 in development

The next release of Workbench is being developed and soon ready for testing. It will include several new features and integration with Geotomo Res2DInv and Res3DInv:



- ERT: Integrated IP inversion
- Automatic half-space inversion to get better starting models
- Add results from res2DInv and Res3DInv to Workbench for visualization on GIS, sections, themes and 3D Viewer
- Add 3D grids to sections and themes
- All new export function for data and inversion models.
- Several updates to Workbench 3D Viewer
- Airborne features and bug fixes

Conferences

Aarhus GeoSoftware is gold sponsor at the 7th international workshop on airborne electromagnetic. Read more here:

AEM2018

[Airborne EM workshop](#)

Other conferences:

EAGE Near Surface, Porto, September
 IP workshop – Rutgers University, October
 SEGJ – Japan – November

Contact us for more information, meetings etc.

UNSUBSCRIBE | ABOUT | NEWS | CONTACT | STAY CONNECTED 

Aarhus GeoSoftware | Inge Lehmanns Gade 10, 06.14, 8000 Aarhus C, Denmark | Tel: +45 6165 6570
info@aarhusgeosoftware.dk | www.aarhusgeosoftware.dk