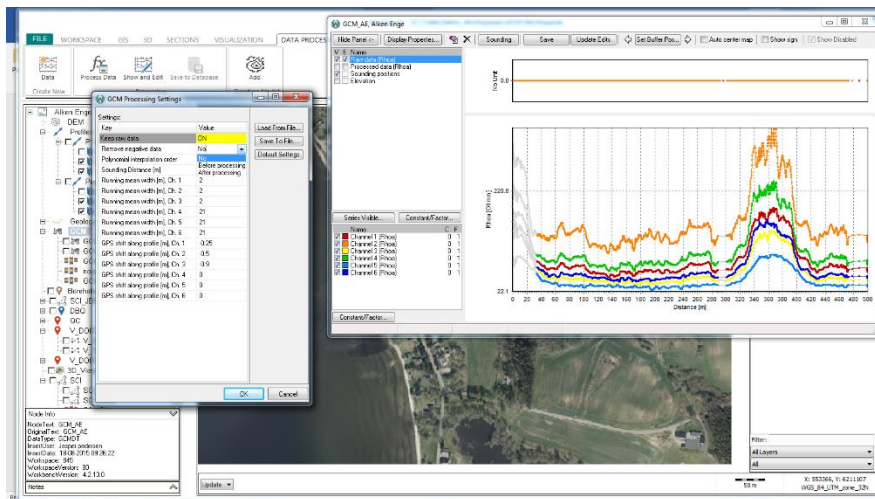


# AGS NEWSLETTER



## *New updates of SPIA and Workbench*

We have released some small updates for both SPIA and Workbench.

### **Aarhus SPIA 3.2.0.0**

- The Amira format importer now supports the EMIT SMARTem data.
- SPIA uses our new online Wiki page for help.
- Bug fixes
- For all feature and changes, see [release history](#)

### **Aarhus Workbench 5.6.3.0**

- Frequency EM data: possible to remove negative data before or after using filters
- Support for elevation on ERT .ewp files
- Option to see data sign in processing and sounding window.
- Bug fixes
- For all features and changes, see [release history](#)

## *New development*

We are working on Workbench 5.7.0.0 which will include several new features. Some of them are:



- New update of AarhusInv inversion code
- New inversion form for airborne data
- Depth Of Investigation (DOI) for all IP parameters
- Update export tool with EPSG, header and column selector
- Support for inversion of Cole-Cole and Maximum Phase Angle for airborne TEM data with IP-effects (test-phase)

## *Conferences*

Aarhus GeoSoftware will be represented at:



AEGC – Sydney, February  
 SAGEEP – Nashville, March  
 Airborne EM workshop – Denmark, June  
 IP workshop – Rutgers University, October

Contact us for more information, meetings etc.

[How did you hear about Aarhus GeoSoftware \(click here\)?](#)

UNSUBSCRIBE | ABOUT | NEWS | CONTACT | STAY CONNECTED 

Aarhus GeoSoftware | Inge Lehmanns Gade 10, 06.14, 8000 Aarhus C, Denmark | Tel: +45 6165 6570  
[info@aarhusgeosoftware.dk](mailto:info@aarhusgeosoftware.dk) | [www.aarhusgeosoftware.dk](http://www.aarhusgeosoftware.dk)