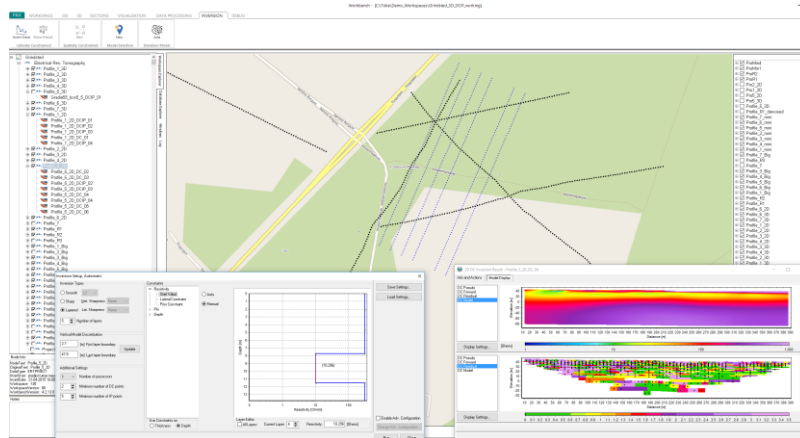


AGS NEWSLETTER



Aarhus Workbench 5.4 has been released with many new features such as:

- WMS server support.
- Import and visualization of geophysical logs (las file format).
- Added support for import of: several data files, elevation and GPS shift for the Streamed ERT module.
- New export features for GCM and ERT.

For this release, we have also focused on streamlining many tools between the different inversion nodes and model selections.

For all new features and fixes see [release doc](#).

To get the update, open Aarhus Workbench and follow the update instructions.

WMS server support



Aarhus Workbench now support WMS servers for the GIS interface, so all users can get a background map. The user can connect to a WMS server when creating a new workspace or to an existing workspace. This update comes with a default WMS server that covers the world, but the user can add and save connection to other servers they want to use.

This tool is a part of Workbench Essentials. A [guide](#) is available on our wiki page.



EAGE 2017 conference in Paris

Aarhus GeoSoftware will be represented at booth 981. Come by for a demonstration or a talk. Contact us for meetings.

