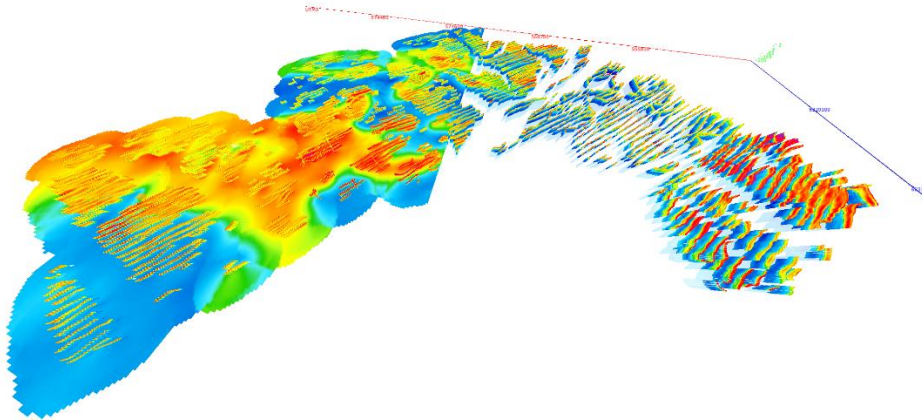

AGS NEWSLETTER



Workbench 5.6 released

We are proud to release Workbench 5.6 with many new features.

3D viewer

A new 3D viewer is available. Add data, profiles, models, boreholes, grids and more to view and present data in a 3D environment.

SCI inversion for SPIA TEM data

With Workbench Essentials it is now possible to open a SPIA database with TEM data and do an SCI inversion (a 1D inversion with 3D constraints), and is useful for field projects where TEM soundings are made in a close grid. A [guide](#) is available at our [wiki page](#).

Support for all EPSG coordinate systems

Workbench now supports transformation of all EPSG coordinate systems, and workspaces can be created in all EPSG coordinate system that have meters as units.

Other new features

- Support for water resistivity and depth as a priori information for inversion of frequency domain data.
- Adding Depth of investigation to interpolated models on profiles.

For all features and changes, see [release history](#)

New development



We are working on airborne IP inversion, full 3D gridding, new processing tool and much more, but we are also working on a big optimization update on many of the “behind the scenes” tools. This includes new updated inversion code, new interface between Workbench and the inversion code, faster GIS, replacing and updating 3rd party components, and general speed optimizations.



Conferences

Aarhus GeoSoftware will be represented at:

AEGC – Sydney, February
 SAGEEP – Nashville, March
 Airborne EM workshop – Denmark, June

Contact us for more information, meetings etc.

[How did you hear about Aarhus GeoSoftware \(click here\)?](#)

UNSUBSCRIBE | ABOUT | NEWS | CONTACT | STAY CONNECTED 

Aarhus GeoSoftware | Inge Lehmanns Gade 10, 06.14, 8000 Aarhus C, Denmark | Tel: +45 6165 6570
info@aarhusgeosoftware.dk | www.aarhusgeosoftware.dk