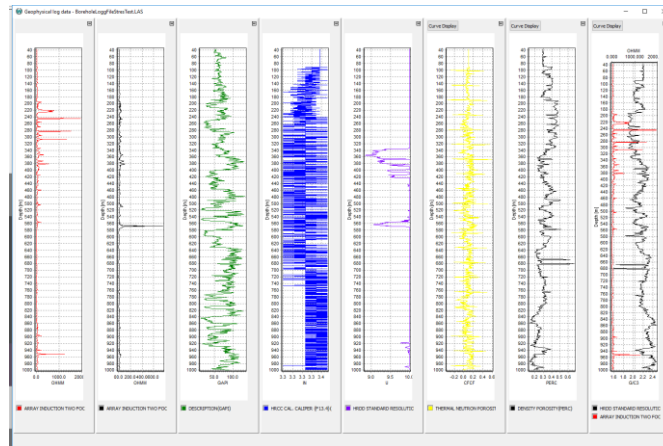


AGS NEWSLETTER



Workbench 5.5.0 released

We have released a new big update for Aarhus Workbench. The update includes several new features for the airborne TEM module e.g. a new processing filter and an updated import form with support for import of battery voltage. Also, geophysical logs can now be displayed on sections as bars or curves. See the full Workbench [release history](#) for more details.



New employee

Aarhus GeoSoftware is looking for a new software developer. Go [here](#) to see the application (in Danish). Otherwise, please contact us for more information.

Conferences 2017

Aarhus GeoSoftware will be represented at:



EAGE Near-surface – Malmø, September
 SAGA – Cape Town, September
 BGS2017 – Antalya, November
 AGU – New Orleans, December

Contact us for more information, meetings etc.

