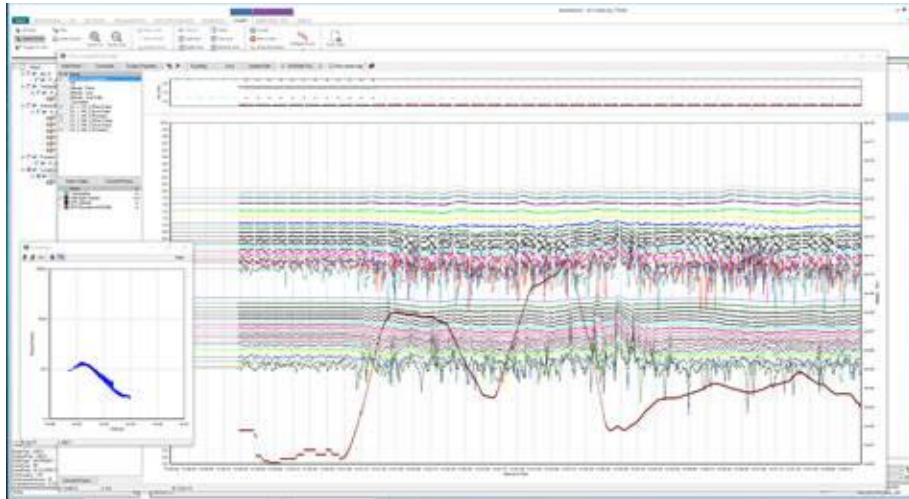


# AGS NEWSLETTER



## ***New Towed TEM module***

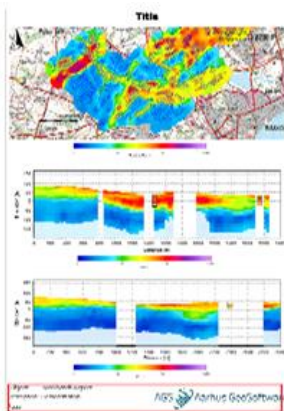
We have released our new Towed TEM module for Aarhus Workbench. The module is for ground based towed TEM systems with high sampling rates. It includes our integrated GIS interface and processing tool, along with LCI and SCI inversion. [read more](#)



## ***SAGEEP 2017***

Aarhus GeoSoftware will be represented in booth #26 at the 2017 SAGEEP conference in Denver. Contact us for meetings. [contact](#)

## ***Next release***



Our next big Aarhus Workbench release will be in January 2017.

One of the new features will be a model report function, where the user can setup their own pdf template and easily make a report with maps and results.

Another feature will be a new Streamed ERT module for users who record continuous ERT data on land or water.

We will also have a new flexible ERT data importer so we can support new ERT instruments and data formats.

